

From the makers of the **SAM** Splint

**6 YEAR**  
SHELF LIFE

# **SAM**<sup>®</sup> Chest Seal

TREATMENT FOR OPEN CHEST WOUNDS



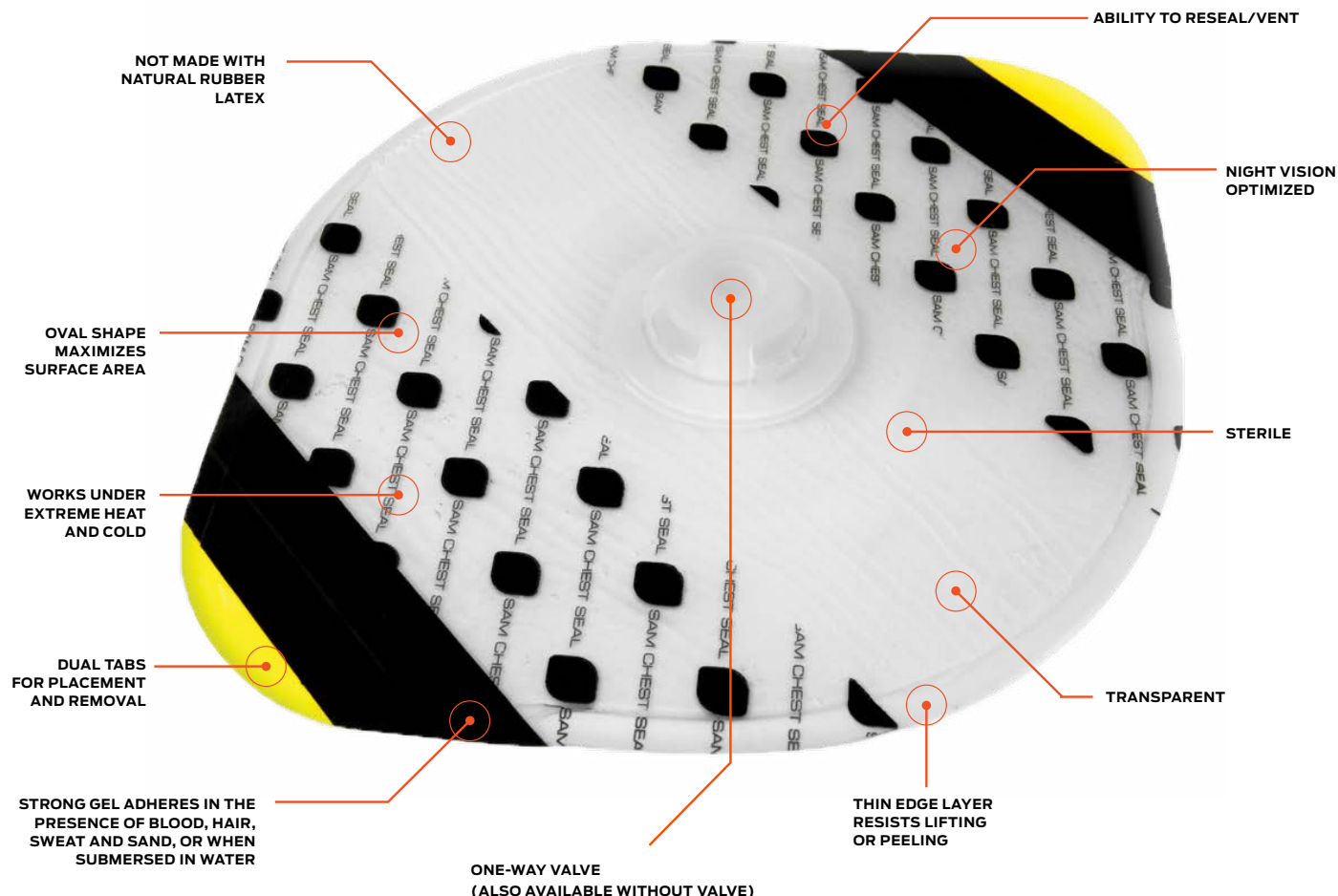
**SAM**<sup>®</sup>  
MEDICAL

NSN VALVE #6510-01-606-7097    NSN NON-VALVE #6510-01-621-1129

[sammedical.com](http://sammedical.com)

## DESIGN

The SAM® Chest Seal meets CoTCCC preferred features for Chest Seals



## FUNCTIONAL DESIGN

The SAM® Chest Seal is an occlusive dressing designed to treat open chest wounds, a life-threatening situation that could lead to tension pneumothorax. This is the second-leading cause of preventable death on the battlefield.

The SAM® Chest Seal is available with or without valve. The valved version features a one-way valve when its cap\* is removed. This provides for low-resistance flow of air out of the chest cavity while preventing ingress. The dome design protects against occlusion from direct external pressure.

With the cap\* in place, the valved dressing is occlusive.

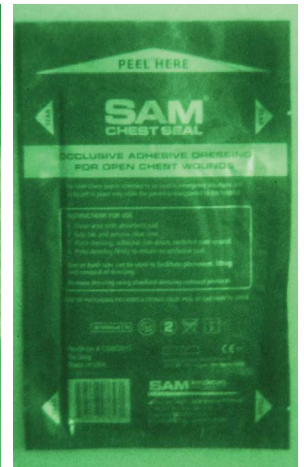
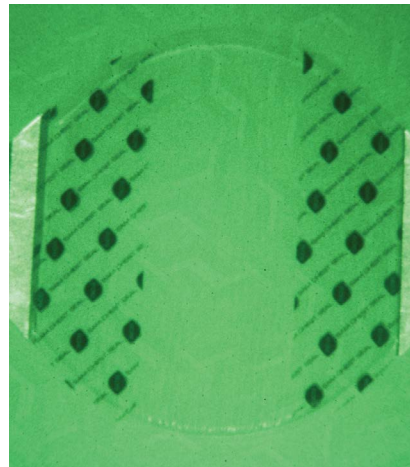
The vacuum-sealed pouch has tear notches at each side, and can also be peeled to provide the first responder with a sterile field. For use in global combat zones, the SAM® Chest Seal is optimized for night vision. Both the packaging and chest seal can be seen under no light conditions with the use of a night vision device. Includes a highly and rapidly absorbent 5" X 9" pad\*\* to help clean the wound.

The SAM® Chest Seal is proudly made in the U.S.A.

\*(Removable) cap is available on Part no. CS062010

\*\*Pad is available on Part no. CS062010 & CS062011

## FEATURES



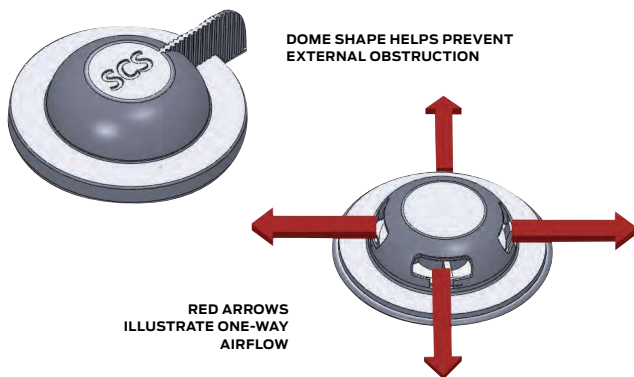
### STRONG ADHESION

The SAM® Chest Seal answers the long-standing need for an adhesive strong enough to adhere to skin that is subject to sweat, blood, hair, sand, or water.

The featured hydrogel adhesive also allows for the ability to reseal, making it ideal for venting.

### NIGHT VISION OPTIMIZED

The SAM® Chest Seal and packaging are optimized for night vision. The pouch, dressing backing, and tabs provide optimal contrast for visibility in normal light, low light, and night conditions (using a night vision device).



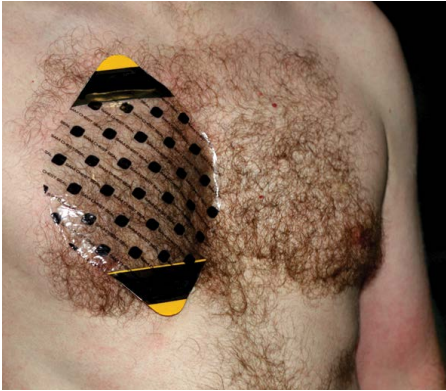
### ONE-WAY VALVE

The SAM® Chest Seal has an optional one-way valve that allows airflow from the chest cavity while preventing ingress. Its patented design also reduces internal obstruction from blood clots or soft tissue. Removing the cap\* exposes the valve; reattaching the cap\* stops the one-way valve operation.

The rugged domed valve was specially designed to prevent external obstruction of the air channels from items such as blankets, clothing, and body armor.

- Sterile
- Not made with natural rubber latex
- Device adheres despite the presence of blood, sweat, hair & sand
- Transparent
- Vacuum packed tear and peel pouch
- Works under extremes of heat and cold
- Elastic for conformability of curved body surfaces
- Meets Military Standard 810G
- Easily applied in battlefield situations
- Tabs facilitate the removal of adhesive [dressing]
- Large oval shape with a thin edge layer that resists lifting or peeling
- Creates an occlusive seal
- Ventable by lifting a tab on seal and easily reseals after venting
- Puncture-resistant packaging; lightweight and rugged
- The SAM® Chest Seal is proudly made in the U.S.A.





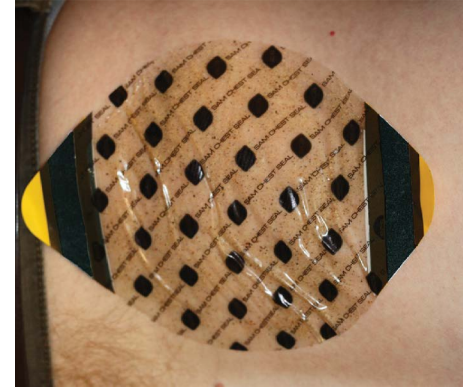
**ADHESION TO BODY HAIR**

Superior adhesion to body with ample hair.



**WATER SUBMERSION TEST**

Image shows adhesive strength after 12 minutes of water submersion.

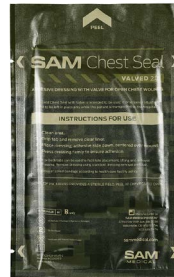
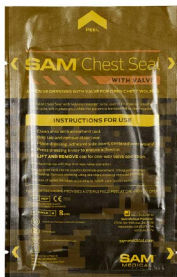


**SAND ENVIRONMENT TEST**

Image shows application with 2.9 grams of sand applied to dressing to simulate application in desert environment

**PRODUCT DETAILS**

<b>VALVED</b> Part No CS062010	<b>NON-VALVED</b> Part No CS062011	<b>VALVED 2.0</b> Part No CS062013	<b>COMBO</b> Part No CS062014
One chest seal per pouch: 9.2" x 7.6"	Two chest seals per pouch: 9.2"x 7.6"	One chest seal per pouch: 9.2" x 7.6"	One valved chest seal 9.2" x 7.6"
Pad, valve cap	Pad		One non-valved dressing 9.2" x 7.6"
Total area of chest seal 42.5 sq. inches	Total area of chest seals: 85 sq. inches	Total area of chest seal 42.5 sq. inches	Total area of chest seals: 85 sq. inches
Total area of sterile packaging available after peeling pouch open: 126 sq. inches		Total area of sterile packaging available after peeling pouch open: 126 sq. inches	
NSN No. 6510-01-606-7097	NSN No. 6510-01-621-1129		



• The SAM® Chest Seal is biocompatible (cytotoxicity, irritation, and sensitization tested per ISO 10993), sterile (validated per ISO 11137-1:2006, ISO 11137-2:2007, ISO 11737-1:2006, and ISO 11737-2:2009), and meets MIL STD 810G.

From the makers of the SAM® Splint, SAM® Pelvic Sling II, SAM® Junctional Tourniquet, SAM® Soft Shell Splint, SAM® Chest Seal, ChitoSAM™ and the creators of Blist-O-Ban®.

Headquartered in Wilsonville, OR, our products are distributed globally in over 60 countries.

MANUFACTURED BY:



27350 SW 95th Ave, Ste 3038  
Wilsonville, OR 97070 USA

“We exist to measurably improve pre-hospital patient care through innovative solutions to the toughest challenges in the field”

**CUSTOMER SERVICE**

customerservice@sammedical.com

T 503.639.5474 F 503.639.5425

TF 1.800.818.4726

SKYPE customerservicesam

Rev.SCS-503-BRO-11